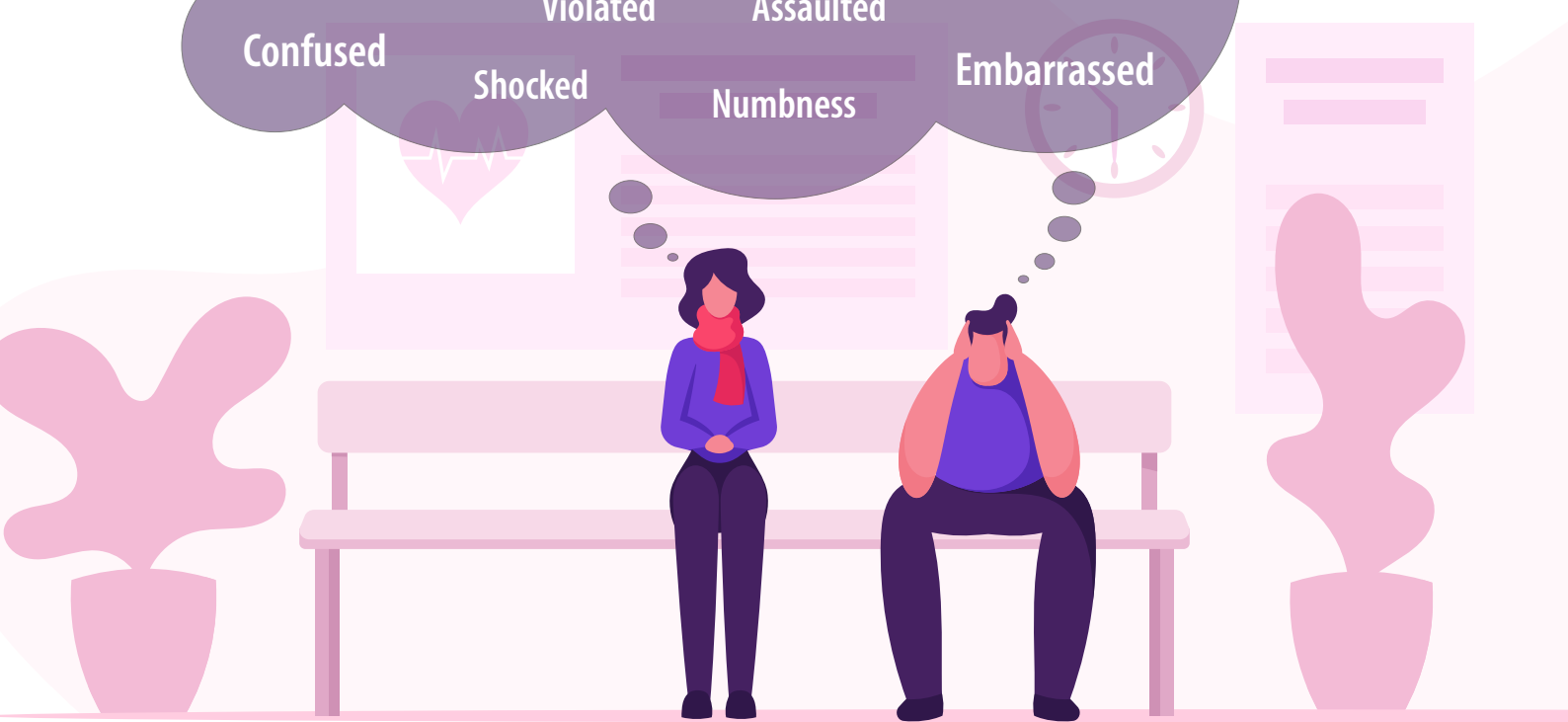
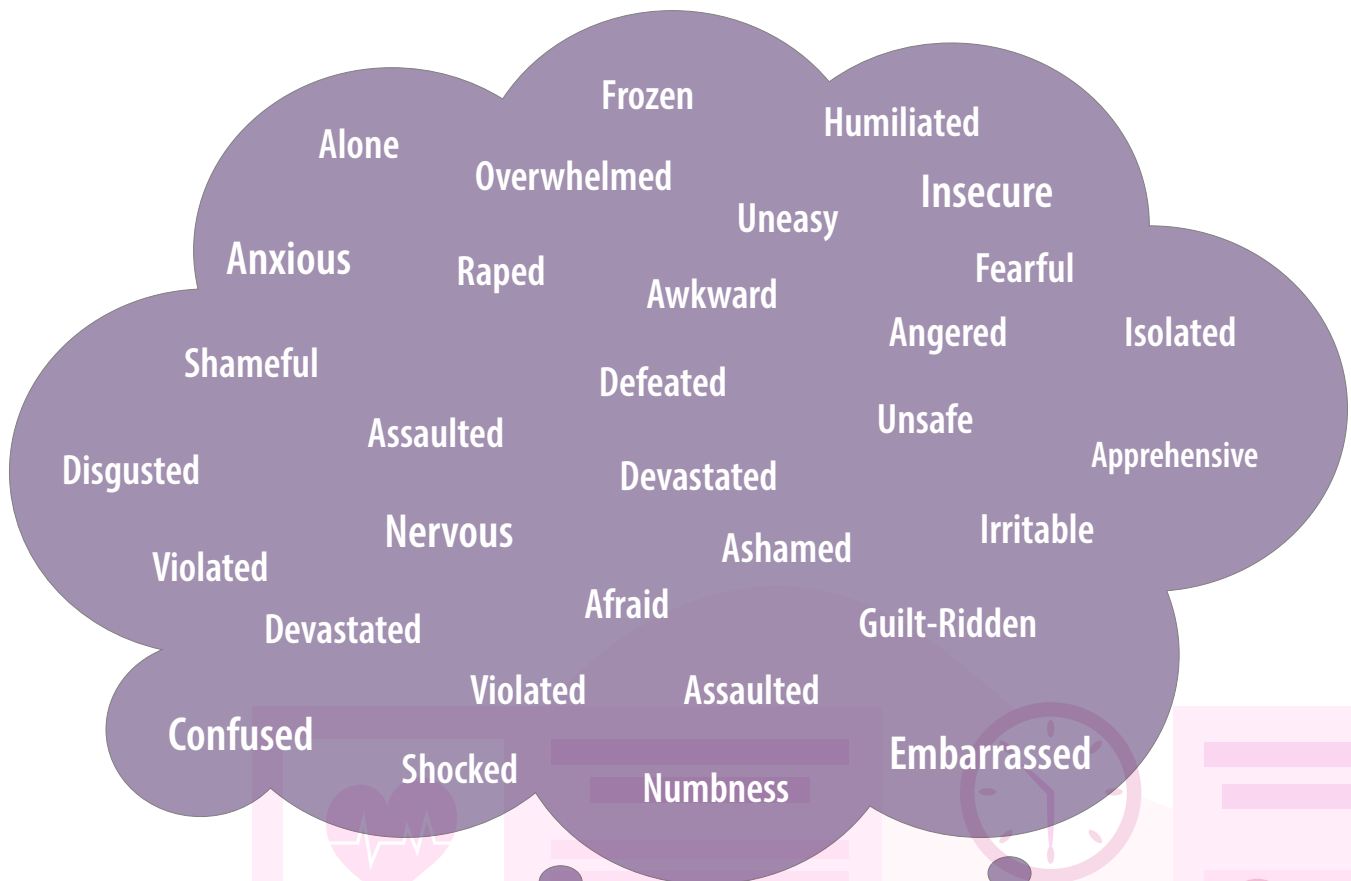


## **HOW PATIENTS FEEL AFTER BEING SEXUAL ABUSED.**

It is the medical and healthcare employees' responsibility to maintain professional boundaries with a patient. Crossing a boundary means the medical and healthcare employee is misusing their position of power in the caregiver-patient relationship for their own personal needs. Even if a patient agrees to inappropriate sexual discussions or actions with medical or healthcare employees, it is still considered to be sexual abuse due to the power dynamics of the relationship.



FOR MORE INFORMATION ON PREVENTING  
SEXUAL ABUSE OF PATIENTS CALL OUR

HELPLINE ON : 041 984 5761  
or visit [www.dignityforpatients.org](http://www.dignityforpatients.org)

Scan this QR Code



**DIGNITY**  
4 PATIENTS